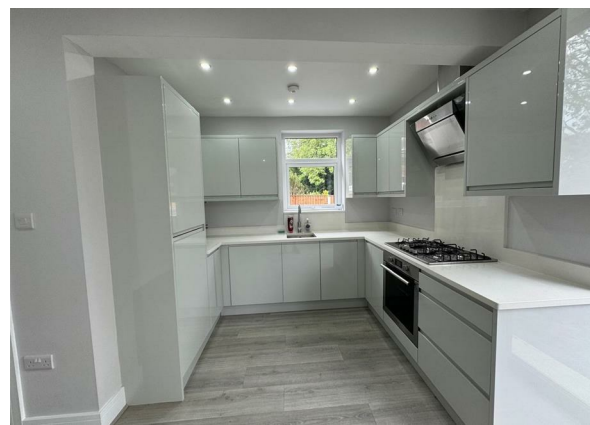


Homestead Crescent, Manchester, M19 1QL

£1,800

Council Tax Band:



Nestled in the charming area of Homestead Crescent, Manchester, this delightful house offers a perfect blend of comfort and convenience. Spanning an impressive 990 square feet, the property boasts two spacious reception rooms, ideal for both relaxation and entertaining guests. The well-proportioned layout ensures that each room flows seamlessly into the next, creating a warm and inviting atmosphere.

The house features three generously sized bedrooms, providing ample space for family living or accommodating guests. Each bedroom is designed to be a tranquil retreat, allowing for restful nights and rejuvenating mornings. The single bathroom is well-appointed, catering to the needs of the household with ease.

This property is perfect for those seeking a family home in a friendly neighbourhood, with local amenities and transport links just a stone's throw away. Whether you are looking to settle down or invest, this house on Homestead Crescent presents an excellent opportunity to enjoy the vibrant lifestyle that Manchester has to offer. Don't miss the chance to make this charming residence your own.



Open House North Manchester

